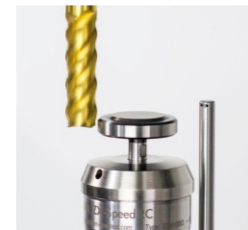


## Available machine sizes

Model No.	X Axes	Y Axes	Z Axes
FX 3015	3.100 mm	1.500 mm	200 mm
FX 4515	4.600 mm	1.500 mm	200 mm
FX 6015	6.100 mm	1.500 mm	200 mm
FX 8015	8.100 mm	1.500 mm	200 mm

### Standard Machine

- Solid structure with metal casing
- Aluminum table with tap holes
- CNC control and servo motors from FANUC with HMI 21" touch-screen
- transmission line from Schneeberger
- Precision tanning boxes from Neugart
- Automatic lubrication of all axes
- Minimal cooling with air or spray mist and 9 liter tank tool measurement
- from BLUM - ZX Speed
- Tool magazine with 24 places
- Warranty extension possible for a further 12 months



### Optional equipment

- \_H01\_Spindle type
- \_H02 Direct measuring system
- \_H03 vacuum system \_600 to \_1500 cubic meters per hour
- \_H04 tool magazine with 48 places
- \_H05 touch probe from BLUM Tc52 IR

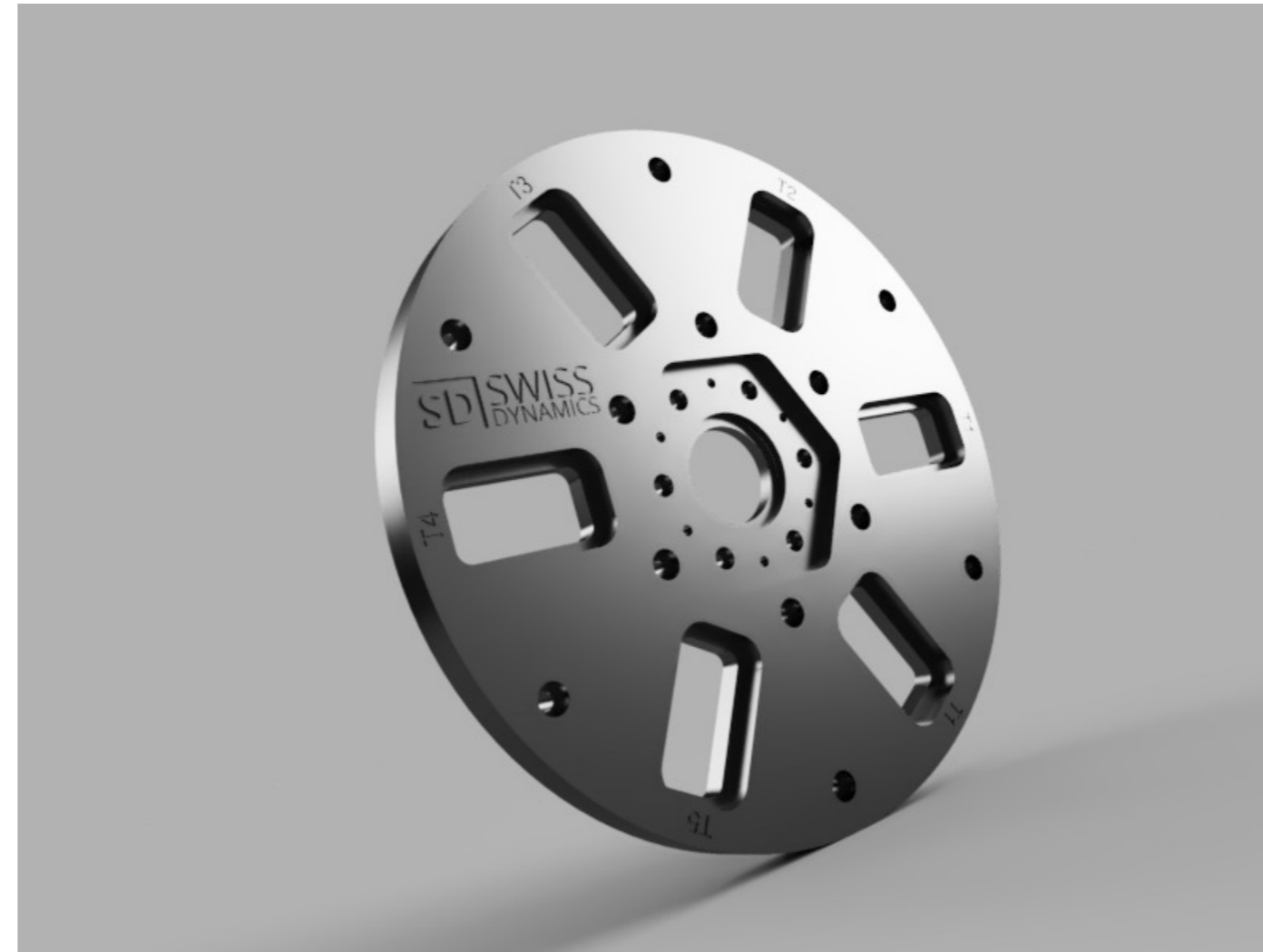


### Environmental benefits

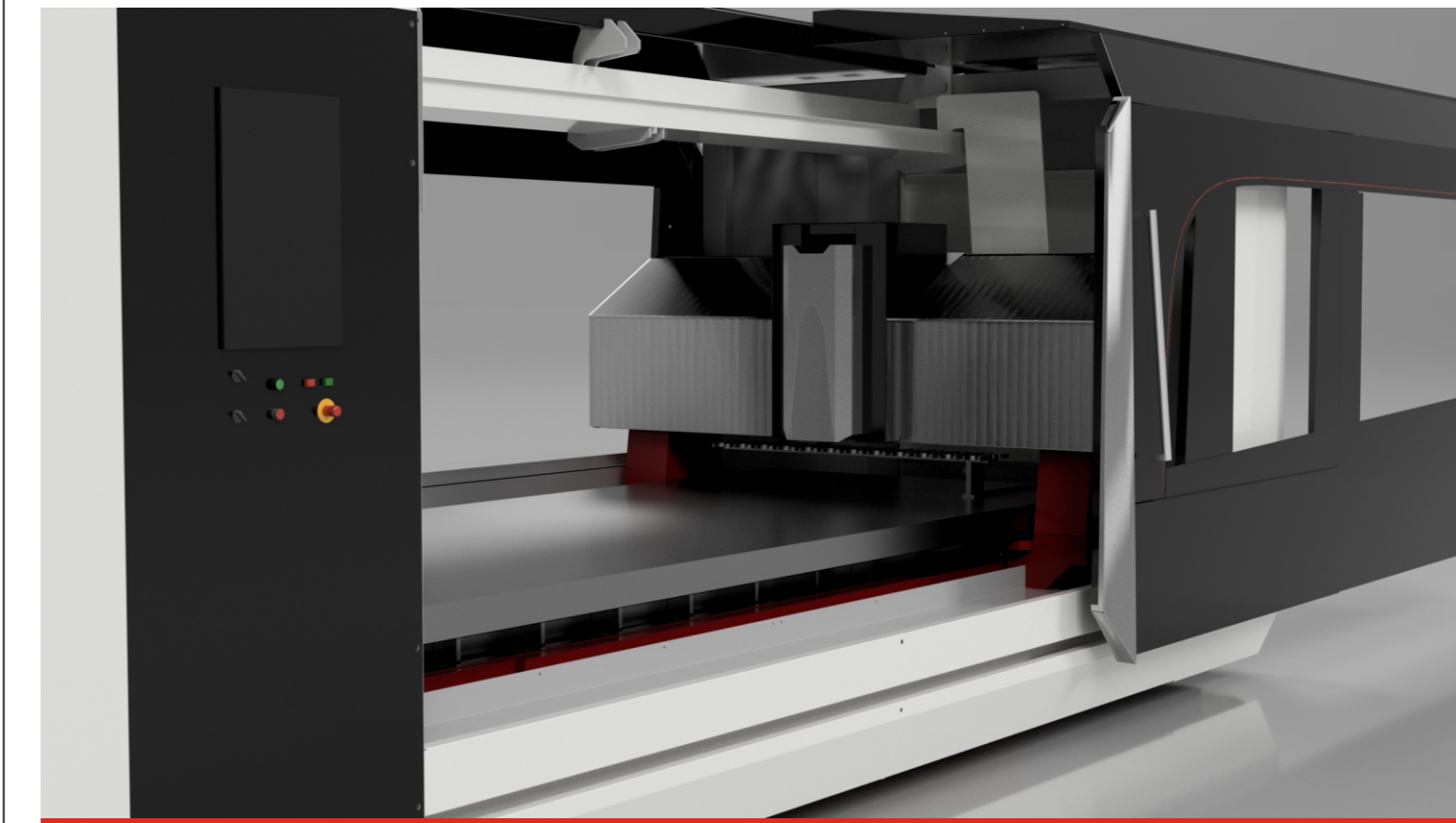
Monitoring option installed on each machine  
It monitors the energy consumption of servo motors, spindle, vacuum pump, cooling system, etc. in real time compressed air.  
The device can calculate the energy consumption in watts and the CO2 emissions for each program executed.



[www.swiss-dynamics.com](http://www.swiss-dynamics.com)



## Portal Milling Machines FX Series



Swiss Dynamics GmbH | Echterdinger Strasse 57 | DE-70794 Filderstadt | Deutschland

Tel: +49-152-56980234 | [office@swiss-dynamics.com](mailto:office@swiss-dynamics.com) | [www.swiss-dynamics.com](http://www.swiss-dynamics.com)



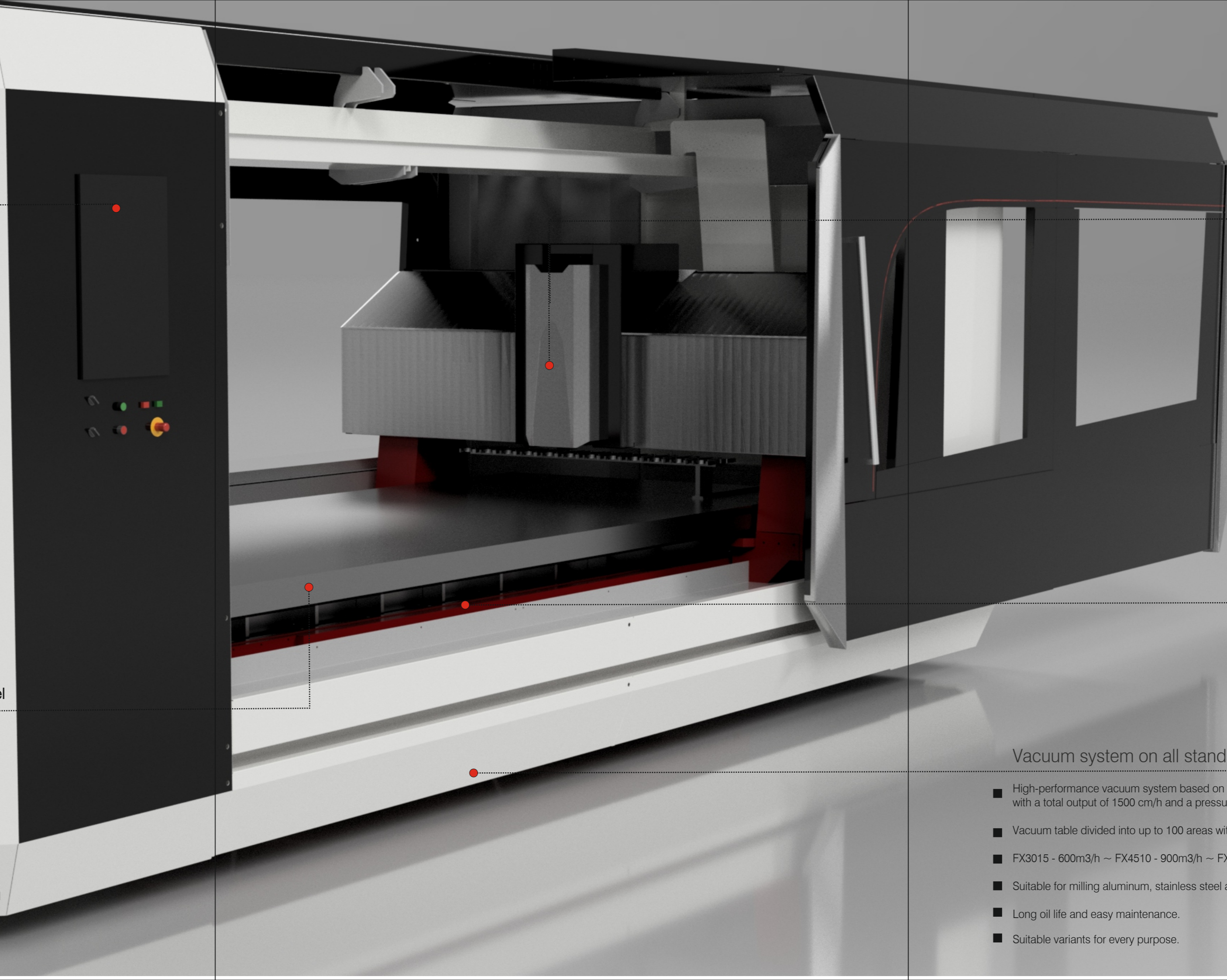
[www.swiss-dynamics.com](http://www.swiss-dynamics.com)

## NEW! CNC control made in Japan

- The new iHMI from FANUC is designed to be extremely user-friendly and makes operating CNC machines simple and efficient.
- The new panel is flat, features ergonomically positioned buttons, completely redesigned hardware and a brand new user interface.
- File display and note function for access to operating instructions, drawings and texts
- User-friendly operator guidance display with clear machine status display
- Increased transmission speeds up to 120 m/min Increased accuracy with nano metric technologies
- The laminated profiles welded in argon gas offer the benchmark for maximum rigidity
- The improved structure concept for the X-axis offers a lot of free space for the work table.
- Rigid Y-axis concept throughout the entire travel range
- FEM optimized design and construction
- Precision in every component and every detail
- Standard tool magazine 24 pieces. / 48 pcs optional

## High speed machining for aluminum, titanium and stainless steel

- Accuracy of positioning in all axes with linear scales.
- Thermal compensation ensures stable, precise and high quality manufacturing process
- Swiss Made gears – precision with a hardened surface
- Sophisticated design and large work area - combined in the IX series Improved ergonomics for easy handling and loading of heavy workpieces
- Huge table up to 3000 x 1300 mm for cutting parts up to 300 kg/cfm Milling feed speed up to 20,000 mm/min



## Spindle motor - Option for every application

■	S1-6 KW 24000 rpm HSK F63	S1-10 KW 24000 rpm HSK F63
■	S1-6 KW 40000 rpm HSK E32	S1-15 KW 42000 rpm HSK E40



## Direct measurement system - optional

- Swiss Dynamics uses high-precision profile linear guides, rollers and planetary gears to achieve excellent accuracy in the machining processes.
- DIRECT measuring system installed  
Precision up to 1µm

## Vacuum system on all standard IKON machines - optional system

- High-performance vacuum system based on the Oerlikon SogeVac vacuum pump with a total output of 1500 cm<sup>3</sup>/h and a pressure of up to 0.8 mBar Abs.
- Vacuum table divided into up to 100 areas with full electronic control.
- FX3015 - 600m<sup>3</sup>/h ~ FX4510 - 900m<sup>3</sup>/h ~ FX6015 - 1200m<sup>3</sup>/h ~ FX8015 - 1500m<sup>3</sup>/h
- Suitable for milling aluminum, stainless steel and titanium.
- Long oil life and easy maintenance.
- Suitable variants for every purpose.

